

MORPH'S

* CHRISTMAS CARDS!

Send something a bit different this Christmas with our print and fold Christmas cards. Choose from 4 designs then simply print them off and fold in the middle. You can also print out, cut and stick your own Morph envelope. Add your message then send to a lucky recipient!

YOU WILL NEED:

scissors
sticky tape or glue

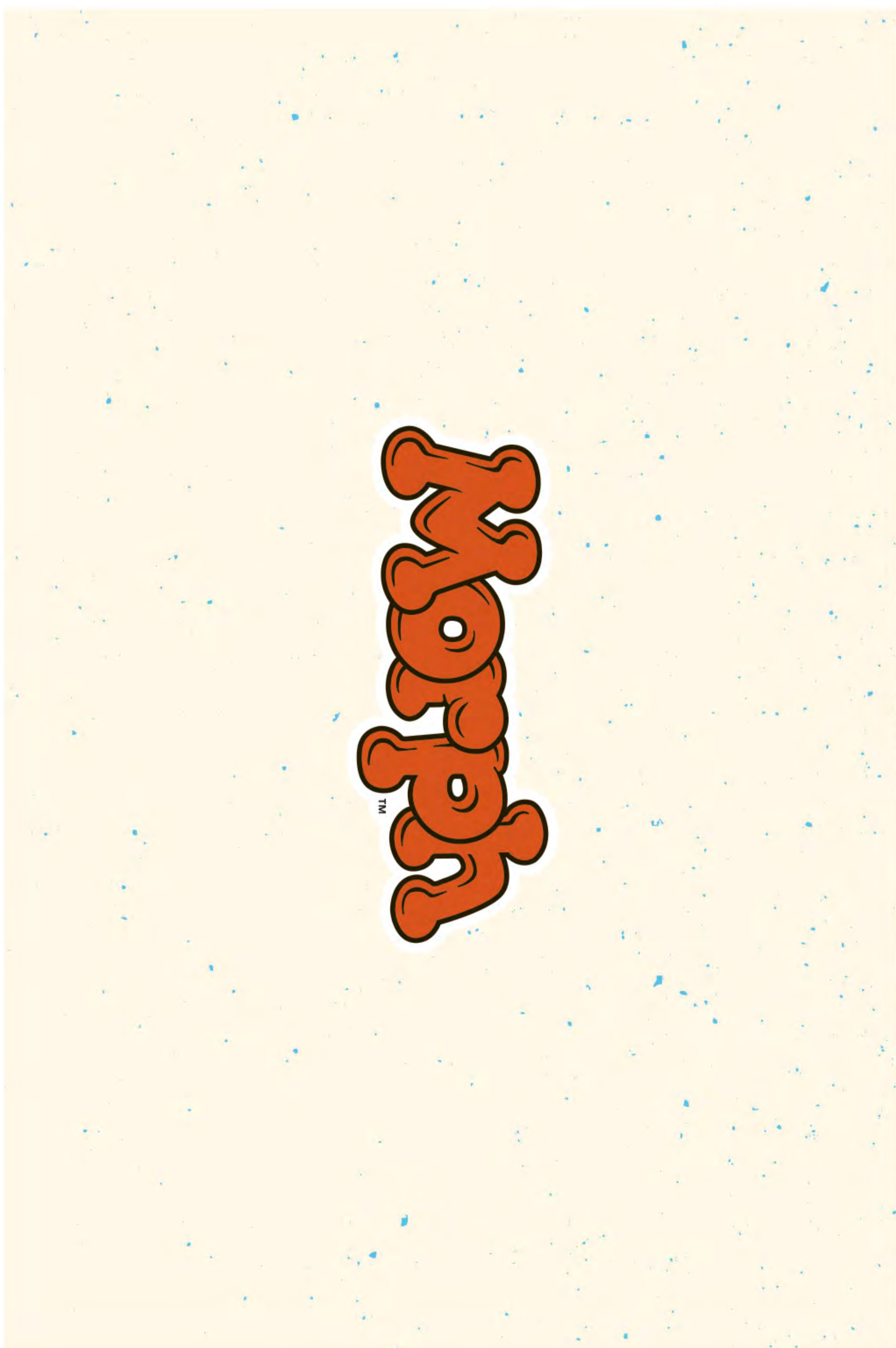
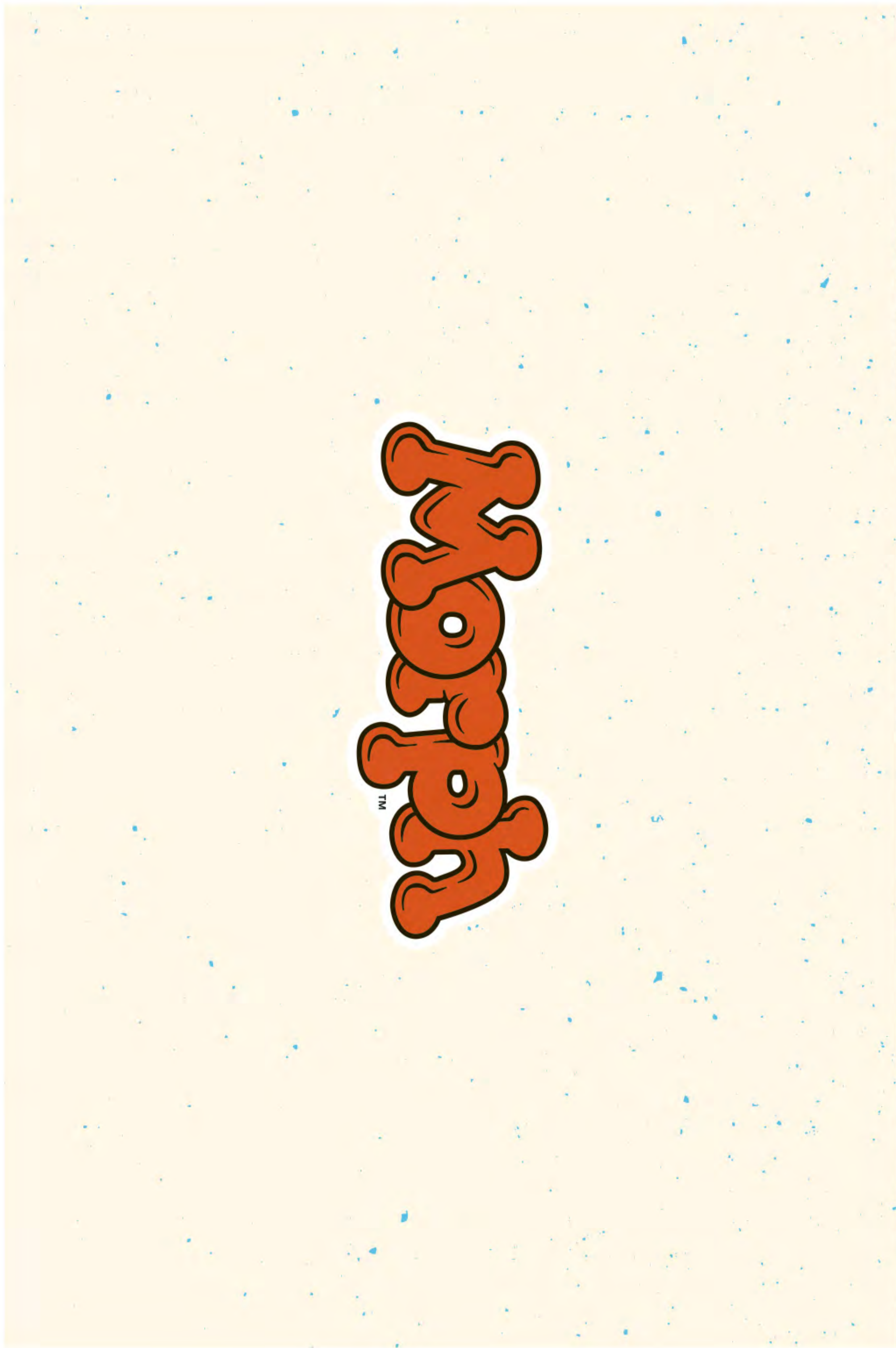


MORPH



MORPH





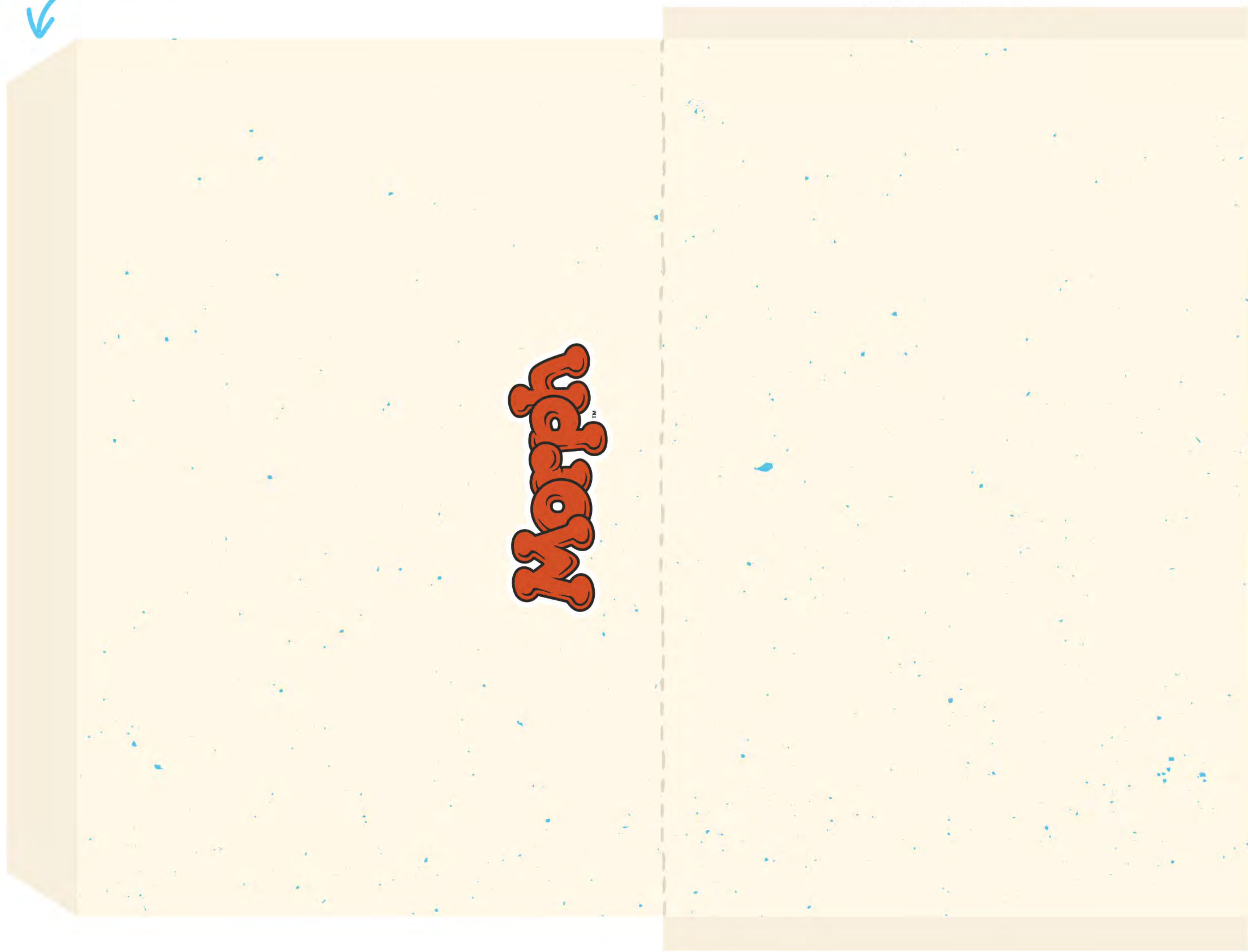


MORPH ENVELOPE:

Print out and cut around the edges. Fold on the dotted line and stick down the tabs. Fold the flap on the top to seal.

tab, fold and seal

tab, fold and stick



tab, fold and stick